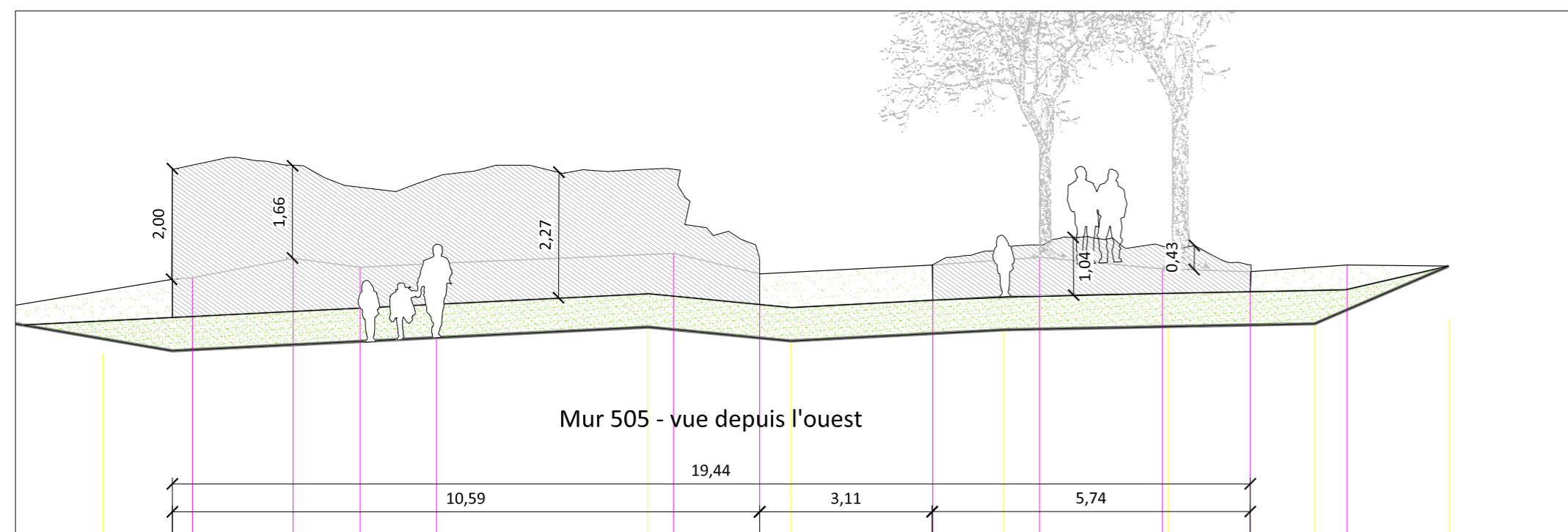
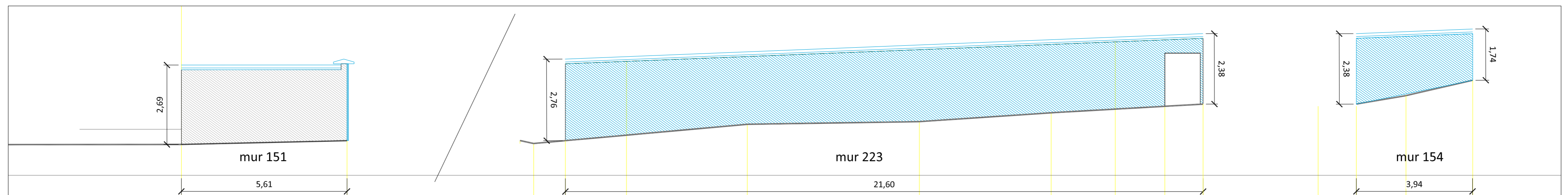
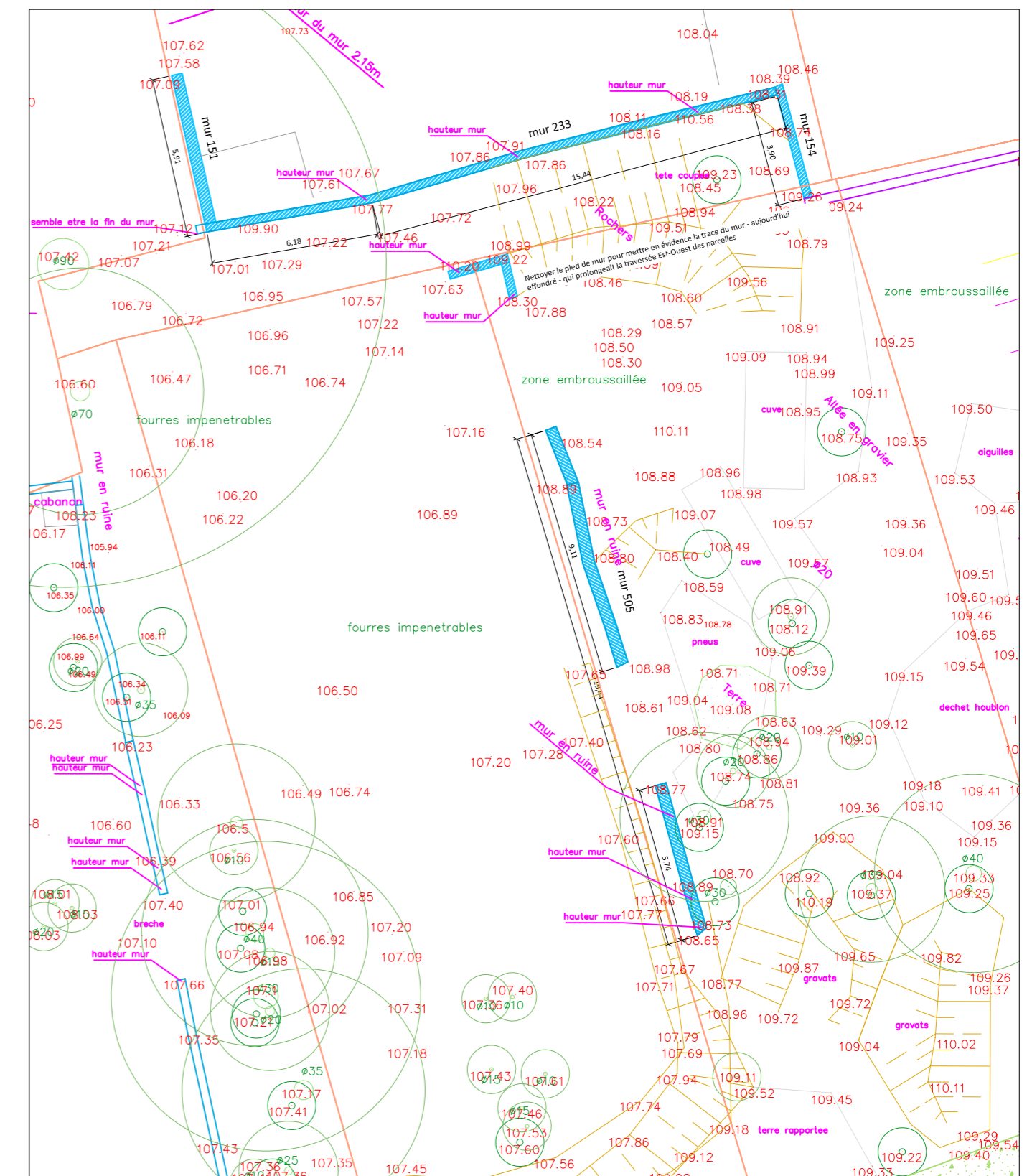


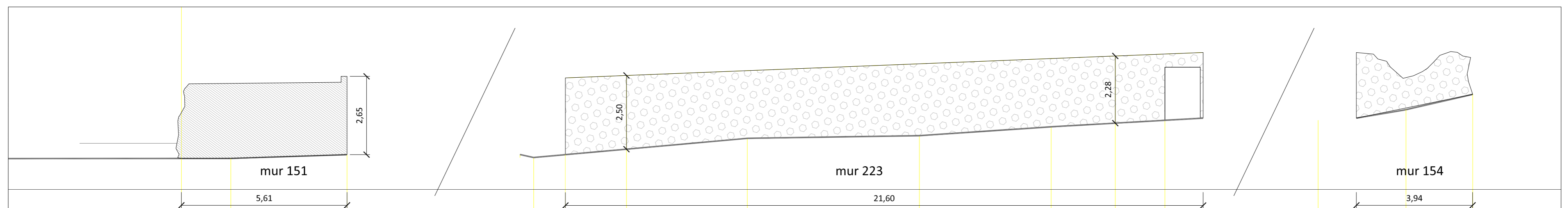
Coupe élévation - **Projet murs 505 - vue Ouest** _ échelle 1/100 _ 1cm = 1m



Coupe élévation - **Existant murs 505 - vue Ouest** _ échelle 1/100 _ 1cm = 1m



Coupe élévation - **Projet murs 151 / 223 / 154 - vue Sud** _ échelle 1/100 _ 1cm = 1m



Coupe élévation - **Existant murs 151 / 223 / 154 - vue Sud** _ échelle 1/100 _ 1cm = 1m